



# Voluson Assisted Reproductive Medicine

*Extraordinary Vision*



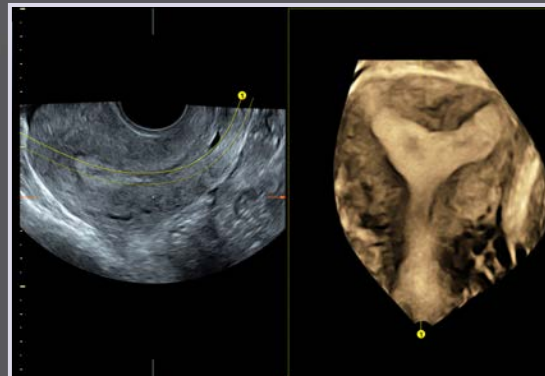
# REALIZE THE POSSIBILITY

Your success is defined by life. Prospective parents seek out your expertise in order to conceive. As a leader in Women's Health Ultrasound, GE Healthcare understands the impact that infertility has on patients' lives and your business. That's why our Voluson™ ultrasound systems continually push the boundaries of Reproductive Medicine imaging to give you simple, yet innovative tools to help you and your patients achieve their dream of a successful pregnancy.

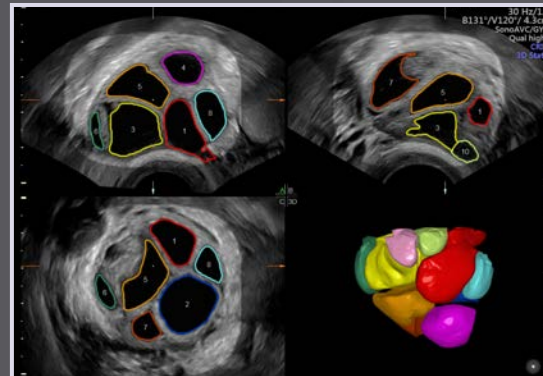
Voluson ultrasound systems are designed with extraordinary capabilities to assist you in fertility assessment, reproductive procedures, and pregnancy confirmation. Capabilities include:

- High resolution imaging with minimal manipulation
- Advanced software tools that help enable consistent, reproducible results
- Specialized automation and ergonomic efficiencies to help you manage your very busy schedule
- Secure connectivity to collaborate with patients and colleagues

Voluson systems are optimized for the needs of reproductive medicine specialists, providing decades of useful innovations to help you and patients meet your goals.



Uterine evaluation in coronal plane



SonoAVC™ follicle helps drive efficient workflow



Vivid contrast resolution, first trimester gestational sac

## Life-changing answers

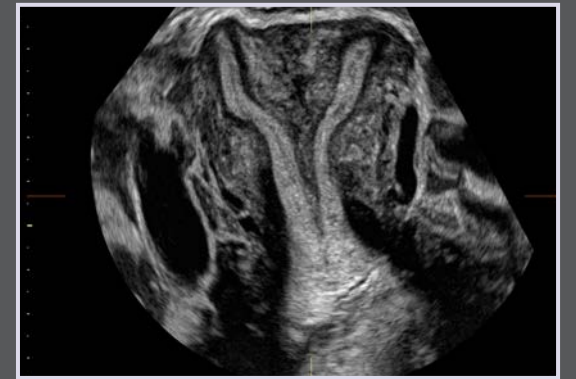
Why can't we conceive? That's one of many questions your patients will pose to you. A Voluson ultrasound system can help you obtain clinical answers to many essential questions, effortlessly. The Voluson Core Architecture is the basis for all of our ultrasounds, delivering exceptional image quality and performance through superior resolution and penetration. Resulting in the critical information you need whether evaluating normal anatomy, searching for pathology, monitoring stimulated follicles, or performing retrievals and implantations – all with minimal system manipulation.

- Efficiently evaluate the uterus, ovaries, and adnexae with clear, crisp 2D image quality and exceptional color Doppler sensitivity
- Confidently perform routine exams and procedures including sonohysterograms by accessing additional information for 3D imaging with scan planes not accessible with 2D imaging
- Accurate diagnosis faster through multiplanar and rendered images using advanced 3D imaging tools
  - Get a more comprehensive view with less effort with Advanced Volume Contrast Imaging (VCI) – area of interest is scanned at a user-defined slice thickness, resulting in increased contrast resolution
  - Save acquisition and assessment time by reducing your image manipulation time and effort using multiple controls ( X-Y-Z axis) by simply drawing a line, curve, poly-line or trace through a structure\*
  - Easy visualization of the coronal plane for evaluation of uterine shape, size and endometrium using SingleView\*

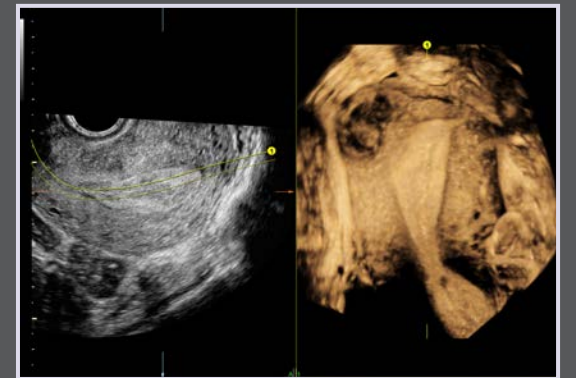
\*Not available on all systems



2D ovary with follicles



3D image of septated uterus



Uterus with fibroid using OmniView



## Because time is critical

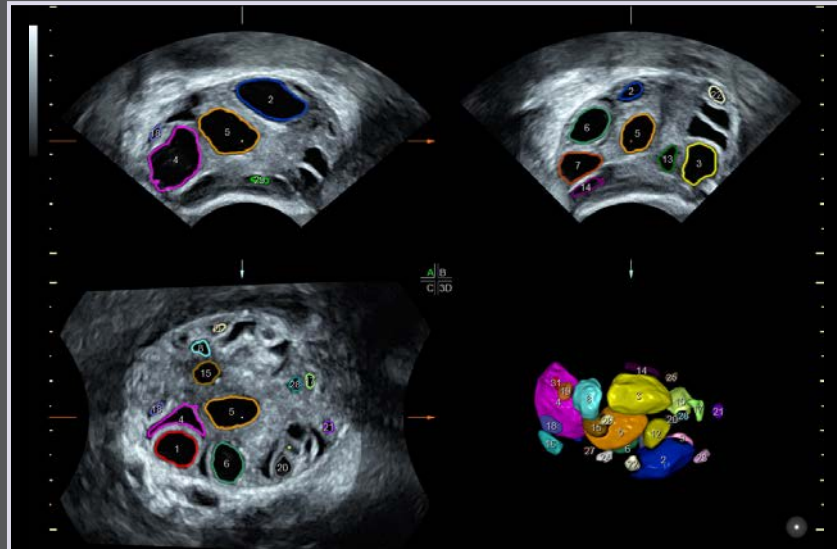
Timing is everything. For your patient, for you, and for your practice. Voluson ultrasound systems are designed for user ease and productivity, with features that simplify exams and enhance workflow. Follicle tracking is one critical aspect in fertility management and a challenge to workflow efficiency when you have multiple patients to see in a short amount of time. The systems offer productivity-enhancing tools that help you keep exam quality high and exam duration short.

Reduce scan time and image acquisition through semi-automated software that will help achieve the necessary anatomical views and data faster to help you:

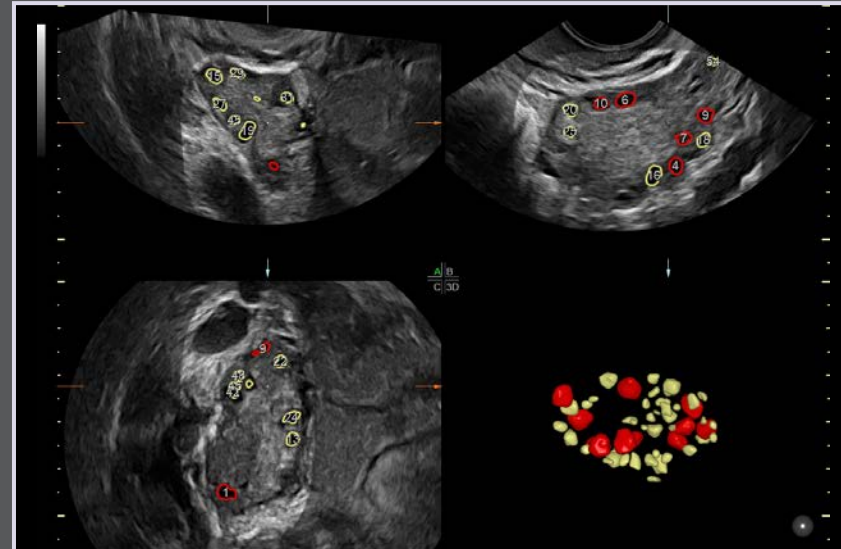
- Easily assess and count antral follicles in the ovary with **SonoAVCantral** (Sonography-based Automated Volume Count) – automatically count and categorize into user defined size groups
- Monitor patient follicles faster with **SonoAVCfollicle** that automatically calculates the number and volume of hypoechoic structures in a volume sweep\*

Manage your busy schedule while providing quality outcomes. The Sono-automation tools can help by reducing variability between users and scan time.

\*Only semi and manual methods available on Voluson Performance Series



SonoAVCfollicle



SonoAVCantral

The Voluson portfolio offers a solution for all practices sizes and needs. Each system is designed to optimize workflow and comfort.

### Voluson Signature Series

Voluson Signature Series is the perfect blend of imaging performance and workflow through superior imaging and productivity tools for busy practices.

### Voluson Expert Series

Voluson Expert Series delivers premium image quality with the most innovative diagnostic features to support even your most complex reproductive cases.

### Voluson Performance Series

Voluson Performance Series is a powerful ultrasound wrapped in a small console containing excellent image quality and optimized workflow with fewer buttons to reduce keystrokes and distractions.

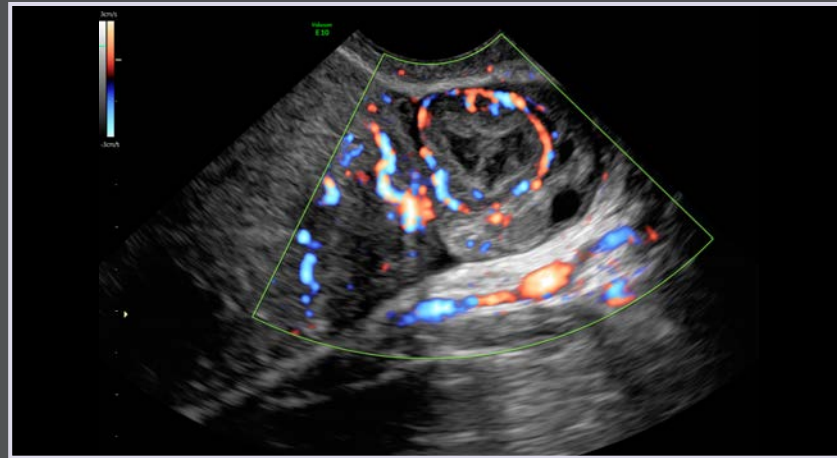




# The right probe for every exam

Get answers quickly while enhancing patient and user comfort by obtaining stunning images with minimal manipulation from a wide range of light, high performance 2D and 3D probes.

- Wide Sector option for endovaginal probes enabling a wider field of view
- Beta View allows the ability to steer the scan plane from the user interface rather than probe manipulation



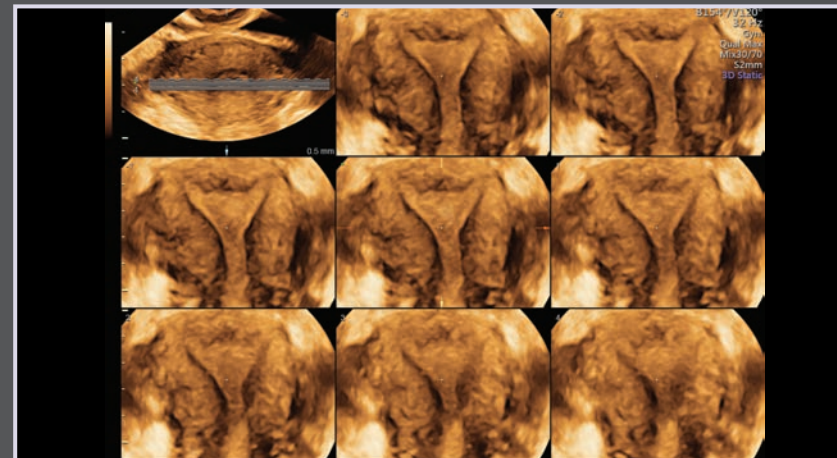
Ovary showing vascularization using HD-Flow™



Nice contrast resolution of uterus



Normal uterus from fundus to cervix with Wide Sector



Uterine TUI of coronal plane

# Connect and share, securely

In your increasingly digital world, the Voluson ultrasound systems present unique offerings to digitally connect with image archiving systems, referring physicians and patients while maintaining the security and privacy credentials as well as records changes to data edits, deletions, etc. with user tracing.

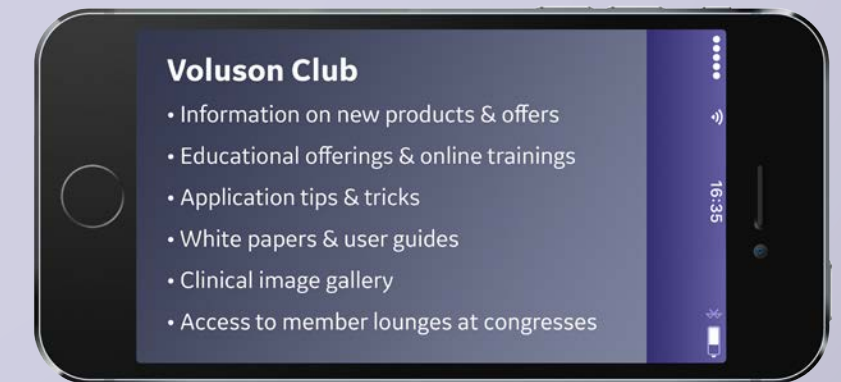
- Maintain patient privacy with user management and login credentialing. The system can be easily configured to restrict access without proper login
- Accurately transfer patient information to the Voluson ultrasound system using a barcode scanner
- Enhance communication with referring physicians and patients by direct export of images and reports via Tricefy™, USB, LAN or 3G connectivity



# The right investment now and for the future

Get the most from your investment in ultrasound by taking advantage of the exceptional support resources behind the Voluson ultrasound systems, including:

- Keep your system performing well, day after day, and enhance your reputation for patient service with our reliable, responsive service department
- Stay at the forefront of your field with access to technology innovation breakthroughs
- Help meet your budget goals with flexible probe protection and financing options
- Connect, share, and learn by joining the VolusonClub. Our global community of more than 15,000 Voluson users where you can access educational resources, clinical papers and peer-to-peer best-practice sharing. ([www.volusonclub.net](http://www.volusonclub.net))



## Voluson Club

- Information on new products & offers
- Educational offerings & online trainings
- Application tips & tricks
- White papers & user guides
- Clinical image gallery
- Access to member lounges at congresses



## **Imagination at work**

© 2017 General Electric Company – All rights reserved.

GE Healthcare reserves the right to make changes in specifications and features shown herein, or discontinue the product described at any time without notice or obligation. Contact your GE Healthcare representative for the most current information. GE, the GE Monogram, Voluson, HD-Flow and SonoAVC are trademarks of General Electric Company. Tricefy™ trademarks are registered trademarks of Trice Imaging, Inc. GE Healthcare, a division of General Electric Company. GE Medical Systems, Inc., doing business as GE Healthcare.

August 2017  
JB3285-XXc