



# ViewPoint™ 6

Transfer ultrasound data into clinical excellence



*Ultrasound reporting and workflow simplified*



# + STREAMLINE ULTRASOUND REPORTING AND IMAGE MANAGEMENT FOR WOMEN'S HEALTH

## Minimize your time on ultrasound documentation

ViewPoint 6 can help you to speed up ultrasound reporting and image management for Women's Health. It receives measurements and exam data directly from your ultrasound system and inserts the information into the report. You can create Quick Reports for commonly used ultrasound exams to auto-populate each form with pre-defined content. Import relevant data from previous exams to save time. Customizations such as hiding fields not used or rearranging sections in the report enable efficient workflows.

ViewPoint 6 for Women's Health was developed according to medical guidelines and in close cooperation with medical societies, such as DEGUM or AIUM.

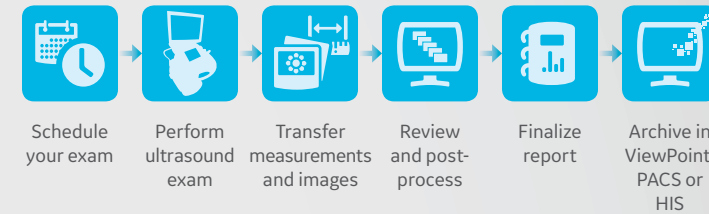
### The solution offers exam templates for:

- 1<sup>st</sup> trimester ultrasound including FMF risk assessment<sup>1</sup>
- 2<sup>nd</sup>/3<sup>rd</sup> trimester ultrasound
- Pregnancy outcome
- Gynecology reporting including tumor classification according to IOTA<sup>2</sup>

Images can be reviewed while reporting – all on one screen. The integrated 4D view solution enables you to post-process and analyze volumes off-line, freeing up your ultrasound system for scanning instead of reviewing.

With one click, you can preview the report and easily add key images and growth charts. Quickly create a highly professional, easy-to-read report that is customized to your individual requirements. ViewPoint 6 interfaces to your IT environment to transfer patient information, images, and reports to your desired locations.

From scheduling patients to sharing professional reports, ViewPoint 6 for Women's Health can cover all the steps in your ultrasound workflow.



## Maximize the accuracy and consistency of your reports

Well-informed expectant mothers seek first-class diagnostic consultation from their obstetricians. They search for doctors who use the newest technology and want to receive ultrasound images to share with loved ones.

ViewPoint 6 helps to provide consistent, accurate, and reliable information sharing between you and your colleagues and patients. ViewPoint 6 automatically transfers patient information and measurements from the ultrasound system into your report, reducing the risk of transcription errors. The technology supports diagnosis, performing calculations in the background to visualize abnormal values and ensuring critical findings are highlighted. Since the terminology of the ViewPoint 6 reports is based on over 25 years of customer feedback and cooperation with medical societies, your reports will reflect the high quality of care and diagnosis that you deliver.

## Let the technology support reimbursement

ViewPoint 6 can help select billing codes for you so you get the correct reimbursement for your ultrasound services. You can highlight mandatory fields required for correct reimbursement so you don't miss entries before closing a report. This is just another way that ViewPoint 6 takes your focus off administrative tasks and keeps it where you want it – on your patient.

<sup>1</sup> Not available in the USA and some other countries.

<sup>2</sup> Not available in all markets.

## ViewPoint 6

GE Healthcare



Brian Edwards, MD  
Metro OB-GYN  
2450 Peachtree Street  
Atlanta GA 30303

MRN: 632489  
Date 19/06/2018

### Second / Third Trimester Ultrasound

Patient: GE-DEMO WH DOB: 30/05/1984  
63005 St. Louis, 9806 Meridan Way

Exam date: 19/06/2018

#### Indication

Fetal anatomy survey

#### Method

Transabdominal ultrasound examination with GE Voluson E10. View: Sufficient

#### Pregnancy

Singleton pregnancy. Number of fetuses: 1

#### Dating

Date	Details	Gest. age	EDD
LMP: 17/01/2018		21 w + 6 d	24/10/2018
Assigned Dating performed on 19/06/2018, based on the dating LMP			

#### Fetal Biometry

Main Fetal Biometry:				
BPD	54.0 mm	22w 3d	70%	Hadlock
OFD	67.0 mm	22w 4d	73%	Jeanty
HC	190.6 mm	21w 2d	19%	Hadlock
AC	175.0 mm	22w 3d	61%	Hadlock
Femur	37.0 mm	21w 5d	37%	Hadlock
Humerus	34.0 mm	21w 4d	38%	Jeanty

#### Fetal Weight Calculation:

EFW	473 g	22w 0d	54%	Hadlock
EFW by	Hadlock (BPD-HC-AC-FL)			

#### General Evaluation

Cardiac activity present.

#### Fetal Anatomy

Umbilical cord 3 vessel cord.

#### Impression

The following structures appear normal: Cranium: Brain, Neck, Face, Heart, Thorax, Abdominal wall, GI tract, Urogenital tract, Spine, Arms, Legs.

Growth and anatomy survey appears normal



Report of patient: WH GE-DEMO, DOB 30/05/1984

## Women's Health ultrasound sample report

With Viewpoint 6 and your expertise, you have everything you need to stay at the **leading edge** of ultrasound reporting in Women's Health and maintain your reputation for excellence. The technology can help you benefit from your data pool to find insights for scientific studies or answers to administrative questions. You can also quickly query the database to find images by keyword and then easily export, anonymize, and insert the images into your presentations.

Benefit from our deep experience interfacing in hospital environments. ViewPoint 6 fully integrates into the IT infrastructure connecting HIS/EMR/PACS. Our team of **knowledgeable IT and ultrasound professionals** are available to support you through the installation process and beyond.

Please visit [gehealthcare.com/viewpoint](http://gehealthcare.com/viewpoint) or contact your local sales representatives for more information.

## Discover a **simple, fast, and efficient** way to create and share professional ultrasound reports.

With ViewPoint 6 – GE Healthcare's Ultrasound IT solution – you'll enjoy the confidence that all vital exam information is structured and accessible on one screen, with critical values visible in one view.





## Imagination at work

© 2018 General Electric Company – All rights reserved.

GE Healthcare reserves the right to make changes in specifications and features shown herein, or discontinue the product described at any time without notice or obligation. Contact your GE Healthcare representative for the most current information. GE, the GE Monogram, and ViewPoint are trademarks of General Electric Company. GE Healthcare, a division of General Electric Company. GE Medical Systems, Inc., doing business as GE Healthcare.

June 2018  
JB42694XX