

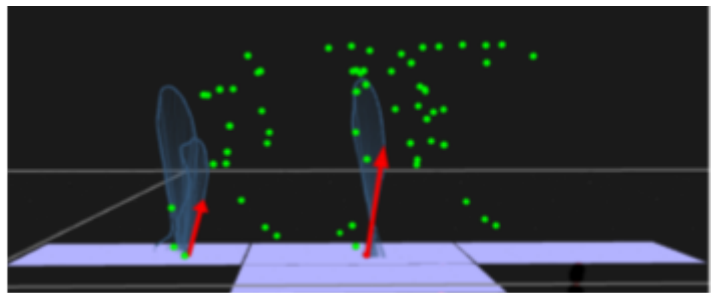
Comparing Movement in Greyhounds Recovering from Corn Surgery to Normal Healthy Movement

Study participants needed!

What is this study about?

Corns are a painful, unnatural thickening in the paw pads. It is a common cause of severe lameness in sighthound breeds (Greyhounds, Whippets and Lurchers). Whilst numerous treatments are available, none are effective long-term. Recently, a new technique has been developed to remove pressure from the affected toe by cutting out a small portion of the toe's tendon, hopefully leading to disappearance of the corn lesion.

We are recruiting dogs to take part in a study that will help determine how this treatment impacts on how the dog walks, both immediately after the surgery and in the longer-term. In order to do this, we are comparing movement patterns in greyhounds that have undergone surgery to normal, healthy greyhounds.



What does it involve?

Dogs will be asked to perform walking trials in our purpose-built biomechanics lab at the University of Liverpool main campus in Liverpool. We will measure the motion of their joints using skin markers, sensors, cameras and x-ray methods. We will also conduct a brief clinical examination, take pictures of their feet and ask the owner to complete a short questionnaire about the dog's age, sex, general health and exercise.

Who can take part?

We are looking to recruit a control group of healthy greyhounds with no corns or any additional signs of health problems that affect their movement. They need to be at least 2 years old but younger than 7 years old and able to exercise for 30-90 minutes per day. They should also be happy to be handled and do some basic tasks: standing still, and walking and trotting in a straight line.